

Installation Guide:

TurboLab Dynamics

Data Evaluation Software

for

vehicle dynamics test and measurement applications

USER MANUAL

Notes:

Table of Contents

General Information	4
Installation of TurboLab Dynamics Software	5
A) Beginning the installation	5
B) Installation of TurboLab Dynamics PRO	7
C) Installation of TurboLab Dynamics ADVANCED	10
D) Installation of TurboLab Dynamics EXPERT	14
E) Activation of TurboLab Dynamics ADVANCED and EXPERT	19

General Information

Legal Notice

Information furnished is believed to be accurate and reliable. However, CORRSYS-DATRON assumes no responsibility for the consequences of use of such information nor for any infringement of patents or other rights of third parties which may result from its use. No license is granted by implication or otherwise under any patent or patent rights of CORRSYS-DATRON. Specifications mentioned in this publication are subject to change without notice and do not represent a commitment on the part of CORRSYS-DATRON. This publication supersedes and replaces all information previously supplied.

All brand names are trademarks of their respective holders.

Copyright Notice

©Copyright 2004, CORRSYS-DATRON

Revision

D829-53-01-01E 07/04 - Preliminary

Contact

International Headquarters:

CORRSYS-DATRON Sensorsysteme GmbH

Charlotte-Bamberg-Str. 12

35523 Wetzlar / Germany

Phone ++49 (6441) 9282-0

Hotline ++49 (6441) 9282-82

Fax ++49 (6441) 9282-17

E-mail sales@corrsys-datron.com

URL www.corrsys-datron.com

North American Headquarters:

CORRSYS-DATRON Sensorsystems, Inc.

21654 Melrose Avenue, Building 16

Southfield, MI 48075 / USA

Phone ++1 (248) 204-0850

Toll-free++1 (800) 832-0732

Fax ++1 (248) 204-0864

E-mail USA-sales@corrsys-datron.com or sales@datron.com

URL www.corrsys-datron.com

Installation of TurboLab Dynamics Software

Please follow the steps below to install TurboLab Dynamics Software.

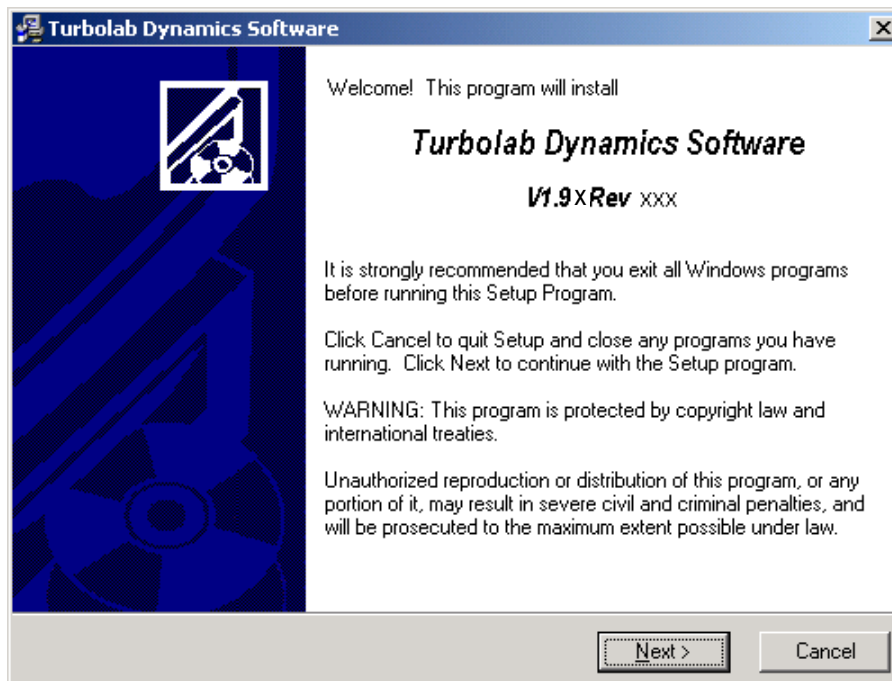
Installation of TurboLab Dynamics Software

A) Beginning the installation

1. **Before you begin, any existing version of TurboLab Dynamics Software must be removed prior to this installation.**
2. Double Click on tlds_19x_XXX.exe. The following information will be displayed. This information is provided for users who want to run TurboLab Dynamics with serial sensor support. To use this function, please install CeCaWin 3.5x before the installing TurboLab. The very latest version is available from our website: www.CORRSYS-DATRON.com.



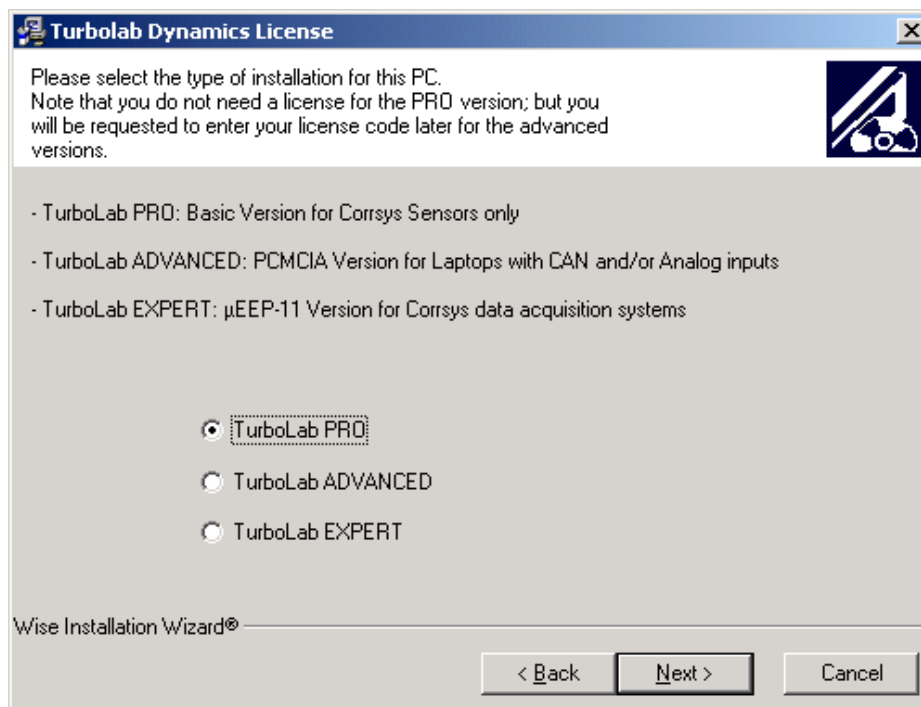
3. Click **OK**.



4. Click **Next**.

4. CORRSYS-DATRON supplies 3 different levels of the TurboLab Dynamics program:

- PRO:** Enables serial communication with CORRSYS-DATRON sensors
- ADVANCED:** Enables serial communication with CORRSYS-DATRON sensors and support of selected CORRSYS-DATRON PCMCIA Cards
- EXPERT:** For CORRSYS-DATRON μ ECP Data Acquisition Systems and serial communication with CORRSYS-DATRON sensors



Please proceed now to the section of the installation guide that corresponds to the TurboLab Dynamics program version that you will be installing:

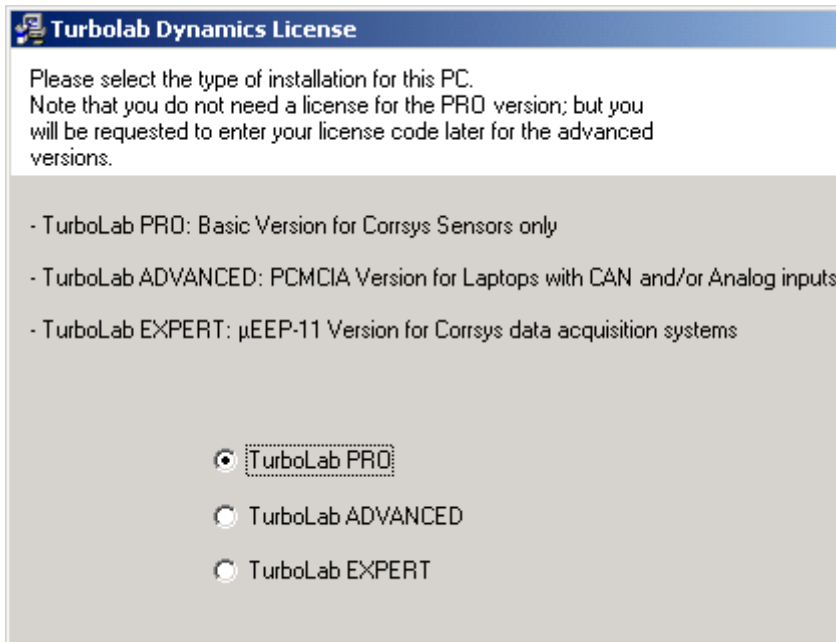
TurboLab Dynamics PRO: see Section B, page 7

TurboLab Dynamics ADVANCED: see Section C, page 10

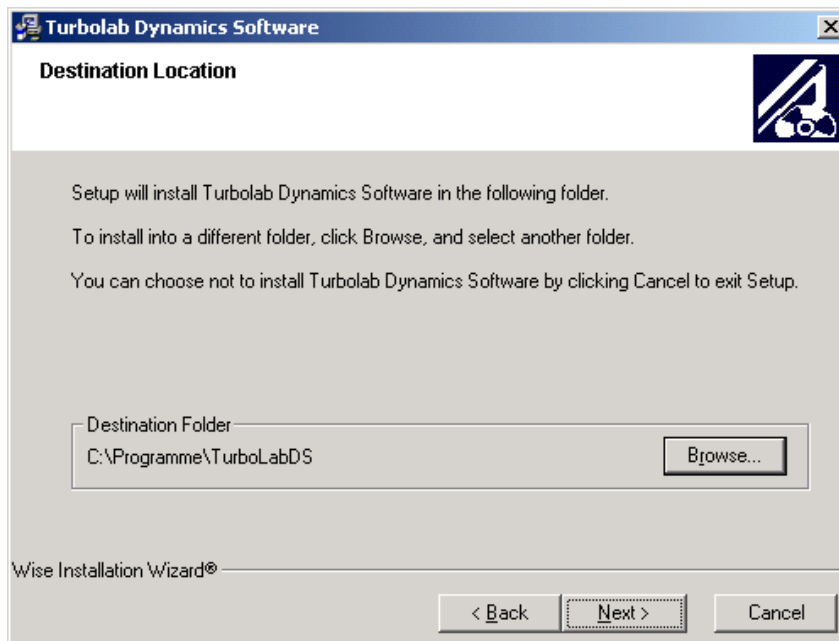
TurboLab Dynamics EXPERT: see Section D, page 14

B) Installation of TurboLab Dynamics PRO

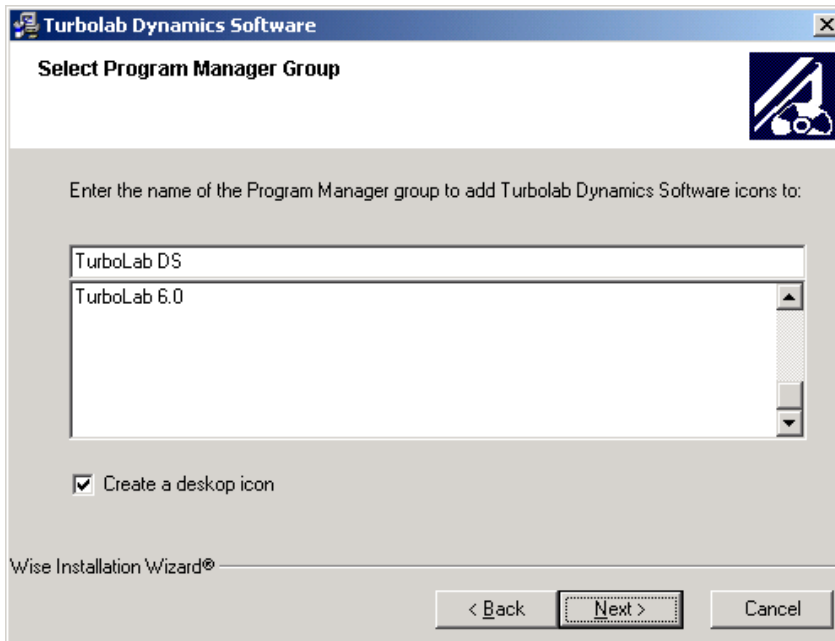
The PRO version supports serial communication with CORRSYS-DATRON sensors only. CeCalWin must be installed prior to installing TurboLab Dynamics PRO.



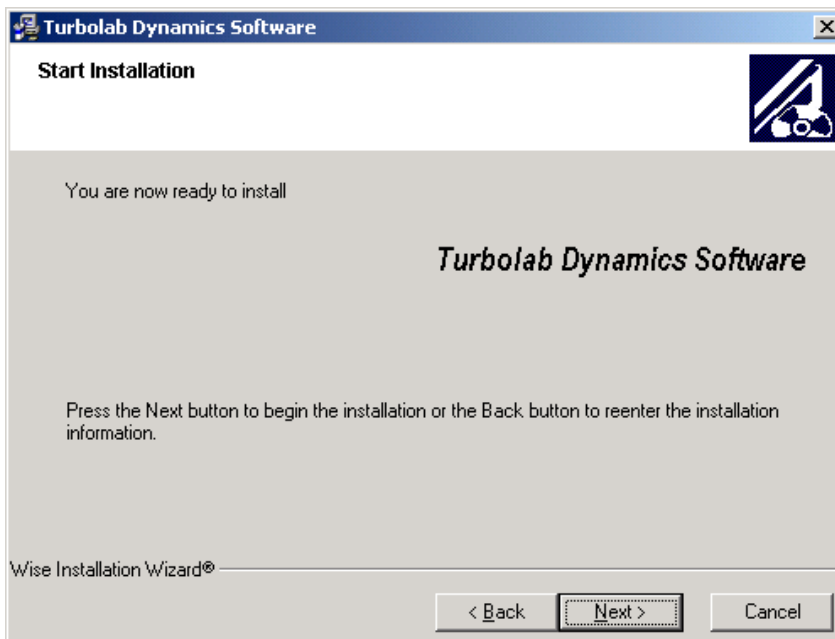
1. Select **Pro Version for Corrsys Sensors only**, then click on **Next**.



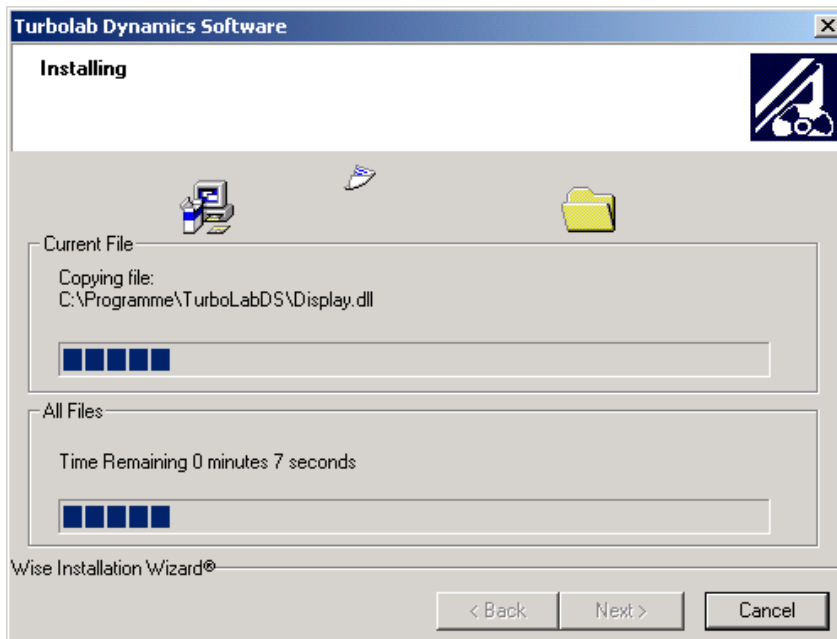
2. Click on **Next** to save TurboLab Dynamics PRO in the Program folder, which is the recommended/default location for the application. To select an alternate location, click on the **Browse** button and browse to the folder into which the application will be saved, then click on **Next** to continue.



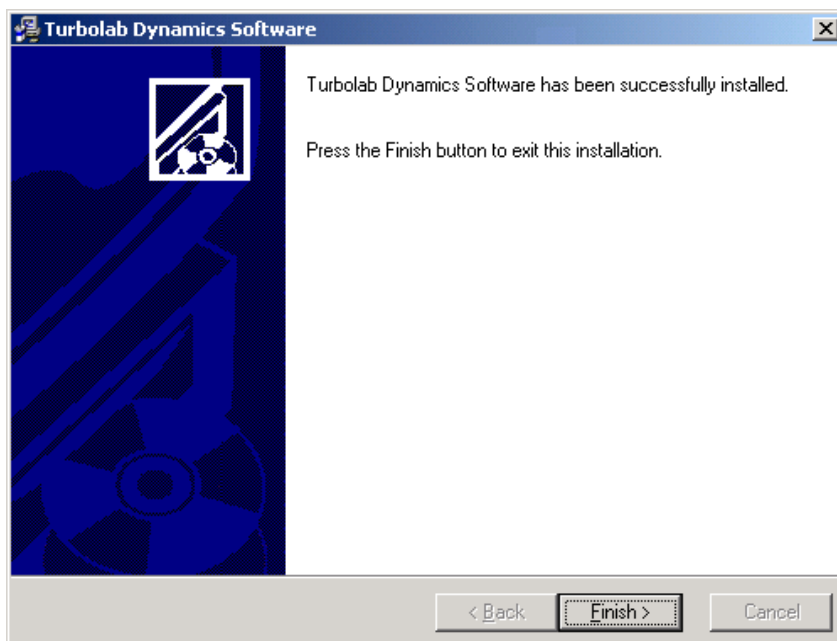
3. Select the name displayed in the program manager, then select **Create a desktop icon** to create a shortcut to the application from the desktop. Click on **Next** to continue.



4. Click on **Next** to begin the installation..



5. The installation is in progress.



5. Click on **Finish** to complete the installation.

The installation of the TurboLab Dynamics PRO is now complete.